



Mon Feb 06 03:59:17 GMT 2012



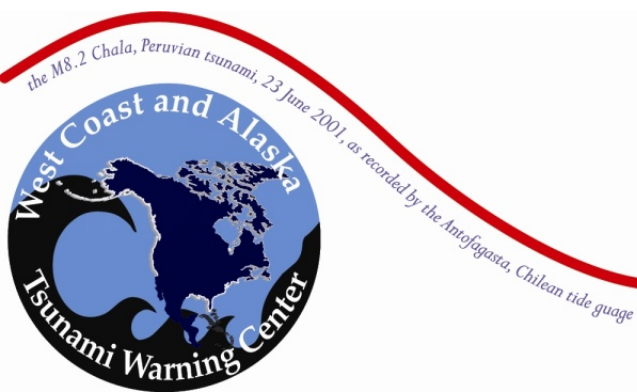
## No Watch/Warning in effect

---

Tsunami message from WCATWC  
[Link to Standard Information Statement](#)  
[Link to Public Information Statement](#)  
[Link to XML/CAP Message](#)  
[Link to Printable Message](#)

**To:** U.S. West Coast, Alaska, and British Columbia coastal regions  
**From:** NOAA/NWS/West Coast and Alaska Tsunami Warning Center  
**Subject:** Tsunami Information Statement #1 issued 02/5/2012 at 7:57PM PST

A strong earthquake has occurred, but a tsunami **IS NOT** expected along the California, Oregon, Washington, British Columbia, or Alaska coast. **NO** tsunami warning, watch or advisory is in effect for these areas.



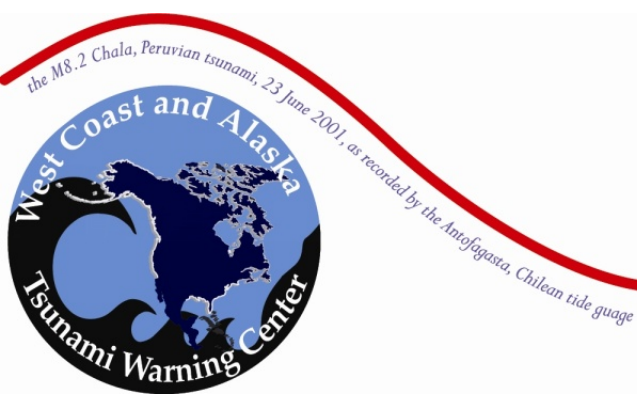


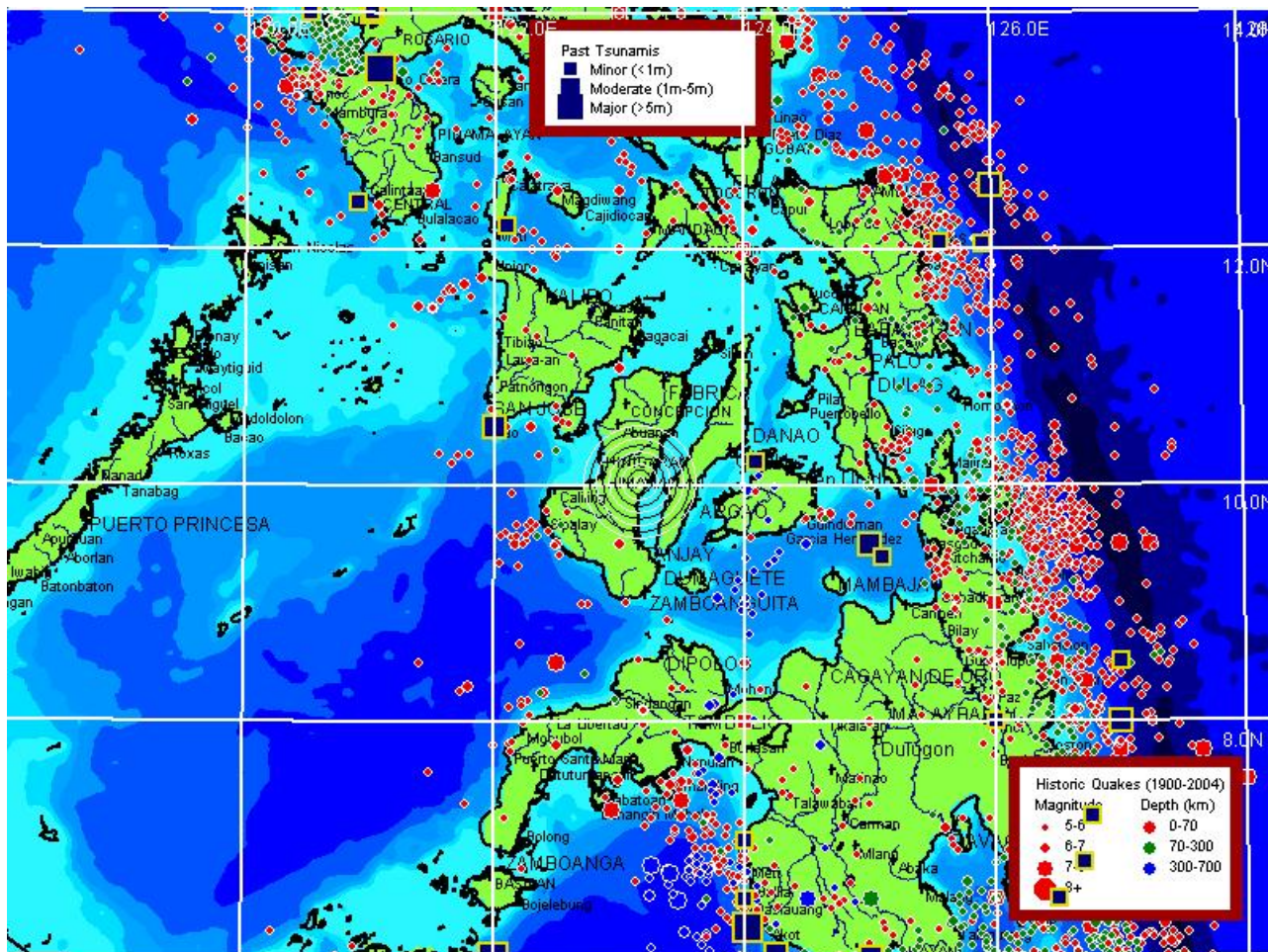
Based on the earthquake magnitude, location and historic tsunami records, a damaging tsunami **IS NOT** expected along the California, Oregon, Washington, British Columbia, and Alaska coasts.

At 7:49 PM Pacific Standard Time on February 5, an earthquake with preliminary magnitude 6.8 occurred in Cebu, Philippine Islands . (Refer to the United States Geological Survey for official earthquake parameters.)

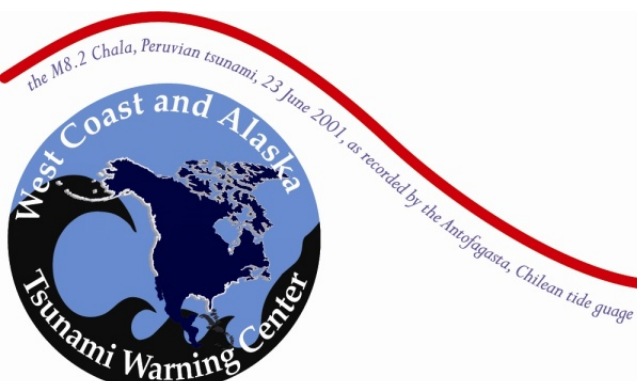
Pacific coastal regions outside California, Oregon, Washington, British Columbia, and Alaska should refer to the Pacific Tsunami Warning Center messages for information on the event.

This will be the only statement issued for this event by the West Coast/Alaska Tsunami Warning Center unless conditions warrant. See the WCATWC web site for basic tsunami information, safety rules, and a tsunami travel time map and table. (**NOTE:** Travel time maps and tables indicate forecasted times only, not that a wave was generated.)

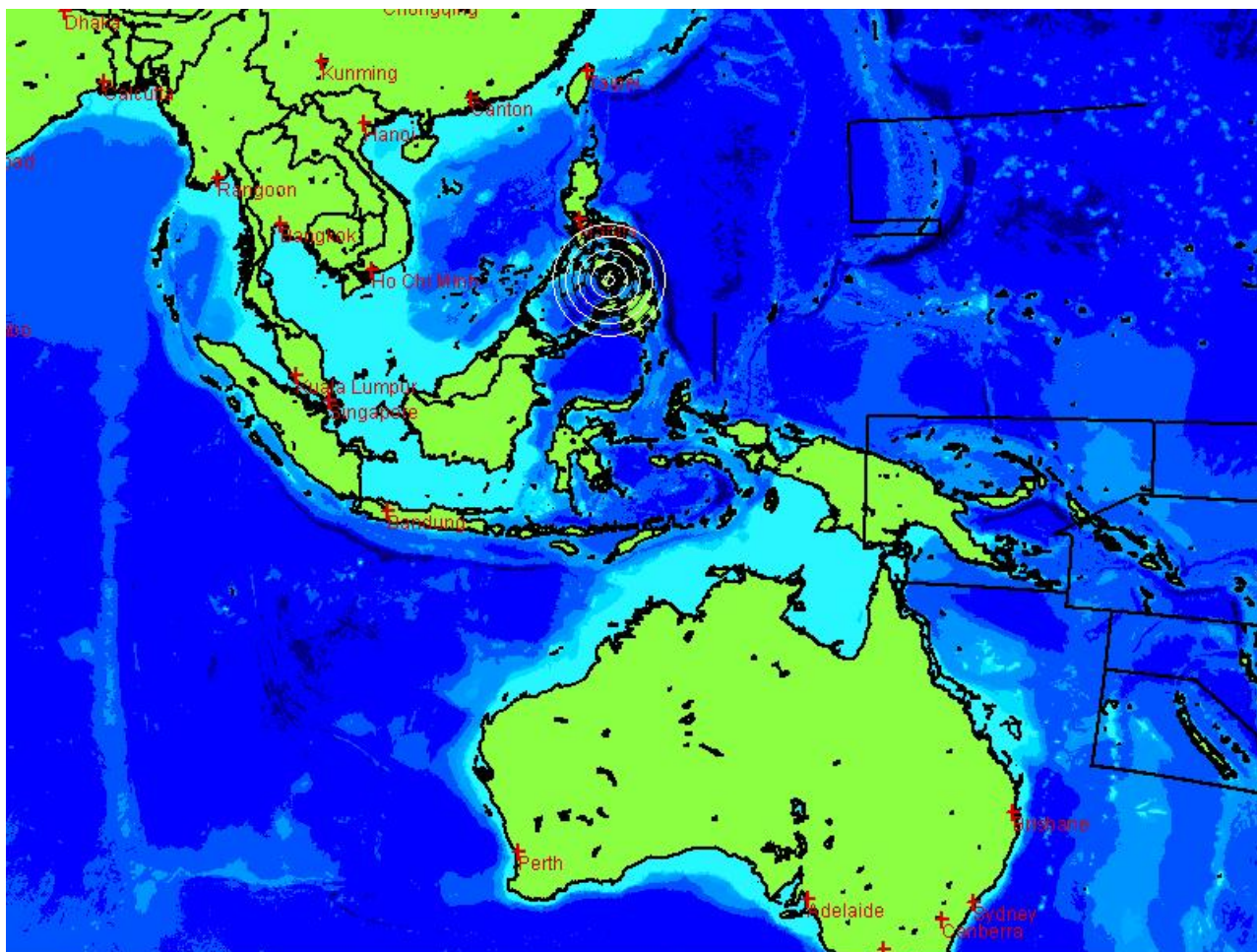




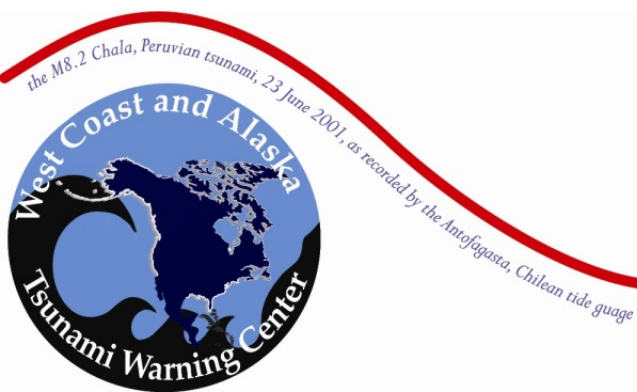
Lat: 10.03 Lon: 123.17 / 2012-2-6 3:49:19 (UTC) / Mag: 6.8  
<http://wcatwc.arh.noaa.gov/messagelyyda6-01.htm>



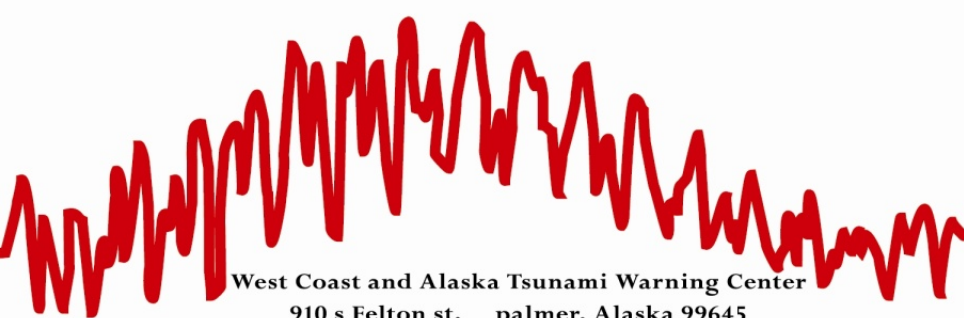
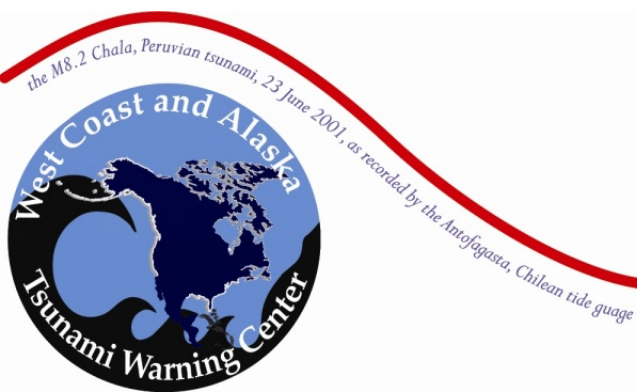
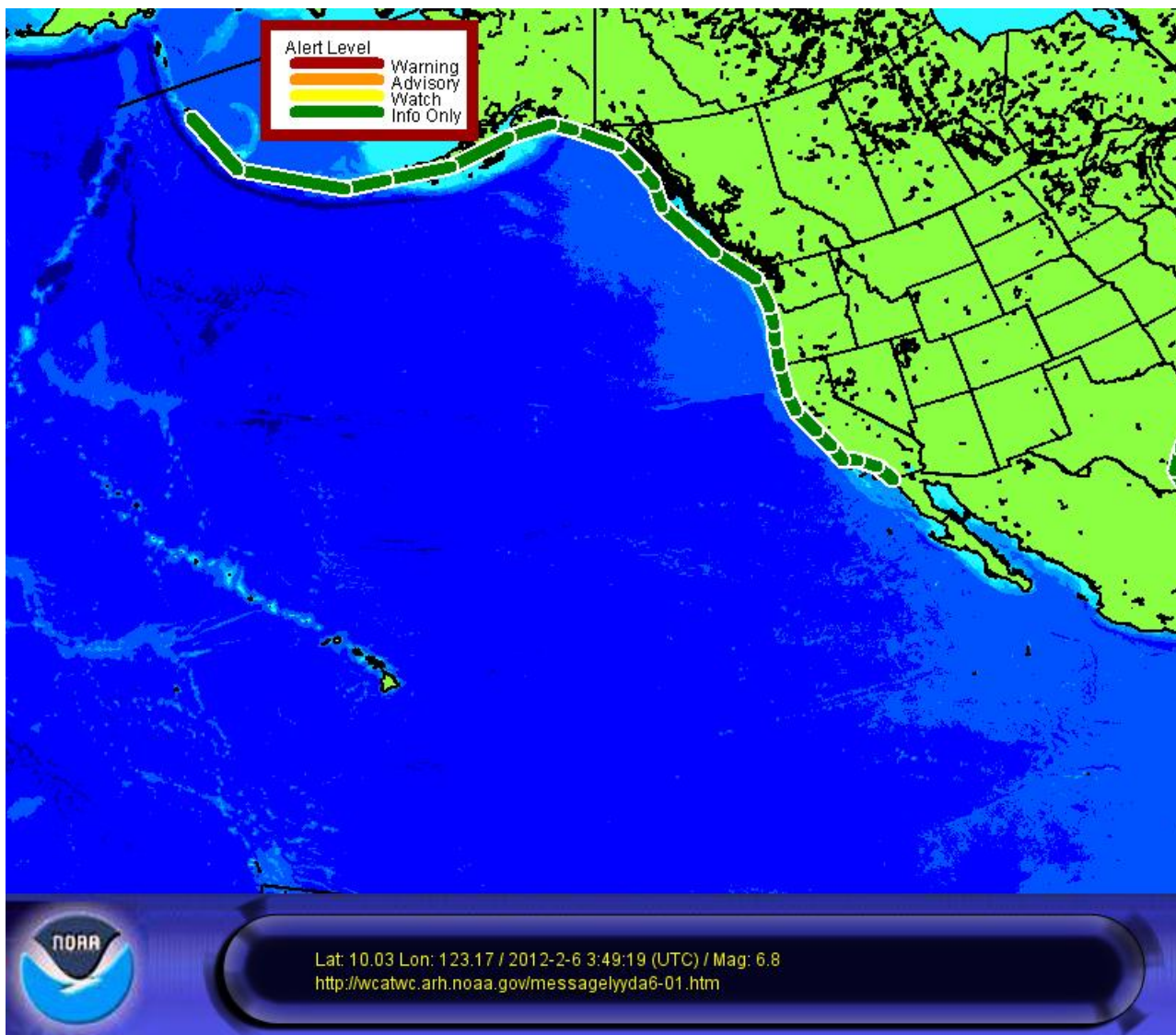
West Coast and Alaska Tsunami Warning Center  
 910 s Felton st. palmer, Alaska 99645  
 +1.907.745.4212 wcatwc@noaa.gov tsunami.gov



Lat: 10.03 Lon: 123.17 / 2012-2-6 3:49:19 (UTC) / Mag: 6.8  
<http://wcatwc.arh.noaa.gov/messagelyyda6-01.htm>



West Coast and Alaska Tsunami Warning Center  
910 s Felton st. palmer, Alaska 99645  
+1.907.745.4212 wcatwc@noaa.gov tsunami.gov



West Coast and Alaska Tsunami Warning Center  
910 s Felton st. palmer, Alaska 99645  
+1.907.745.4212 wcatwc@noaa.gov tsunami.gov

